

REGULATION AND REUSE OF SCRAP WOOD

MICHIGAN FOREST BIOECONOMY CONFERENCE

FEBRUARY 13, 2019

DUANE ROSKOSKEY

DEQ, WASTE MANAGEMENT AND RADIOLOGICAL PROTECTION DIVISION

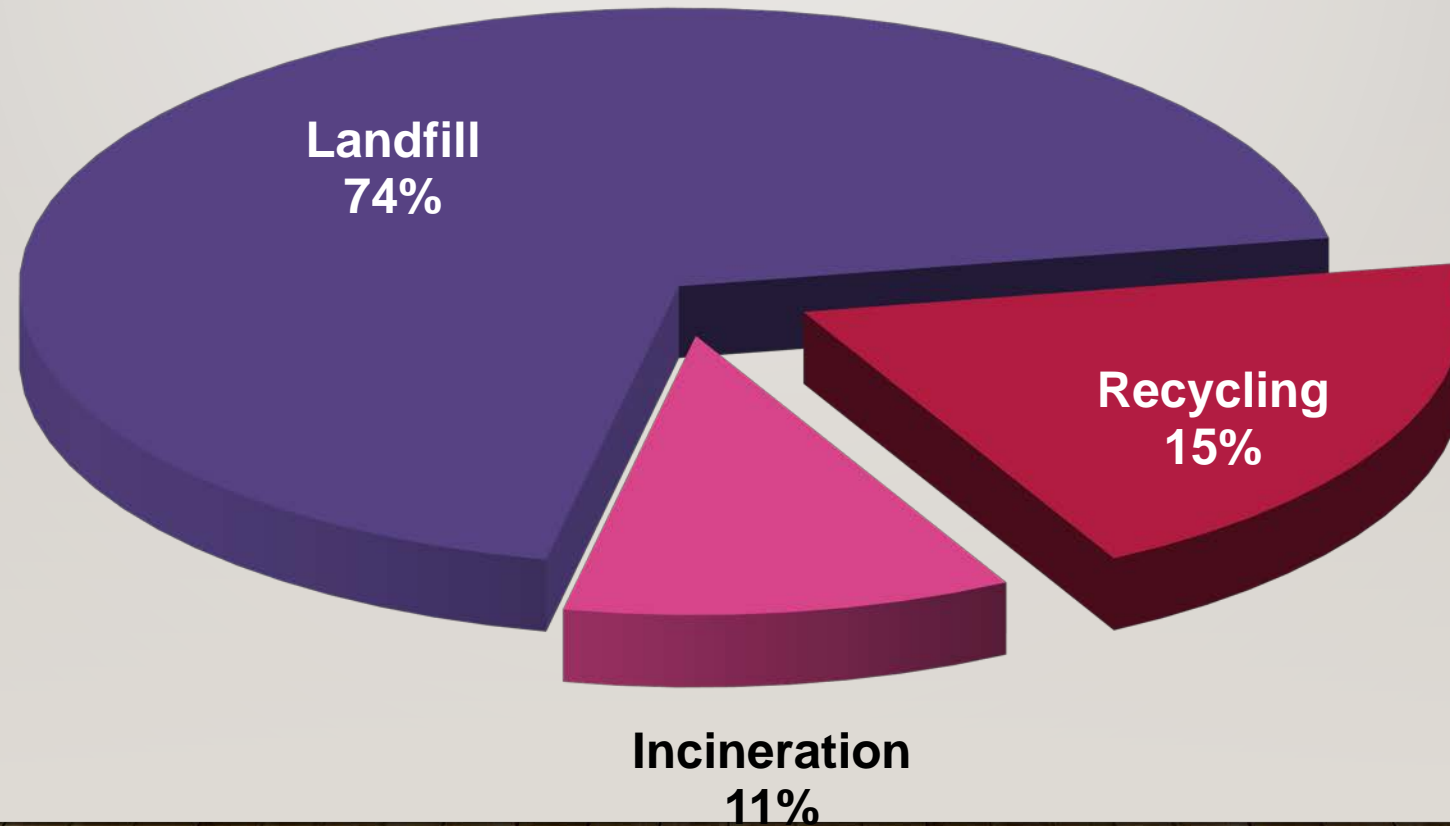
ROSKOSKEYD@MICHIGAN.GOV (517-484-3445)

TOPICS

- Solid Waste Regulations
- Statutory Exemptions
- Specific Exemptions
- Com[posting Regulations
- DEQ Grants
- Open discussion

WHERE WE ARE TODAY

Solid Waste Stream in Michigan



1999 data from MRC

SOLID WASTE REGULATIONS

- Part 115, Solid Waste Management, of the Natural Resources and Environmental Protection Act, 1994 PA 451, as amended
- Michigan's Solid Waste Management Act Administrative Rules
- Subtitle D of the federal Resource Conservation and Recovery Act of 1976, as amended

DEFINITIONS

- "Wood" means trees, branches and associated leaves, bark, lumber, pallets, wood chips, sawdust, or other wood or wood product but does not include scrap wood, treated wood, painted wood or painted wood product, or any wood or wood product that has been contaminated during manufacture or use.
- "Treated wood" means wood or wood product that has been treated with 1 or more of the following:
 - (a) Chromated copper arsenate (CCA).
 - (b) Ammoniacal copper quat (ACQ).
 - (c) Ammoniacal copper zinc arsenate (ACZA).
 - (d) Any other chemical designated in rules promulgated by the department.
- "Scrap wood" means wood or wood product that is 1 or more of the following:
 - (a) Plywood, particle board, pressed board, oriented strand board, fiberboard, resonated wood, or any other wood or wood product mixed with glue, resins, or filler.
 - (b) Wood or wood product treated with creosote or pentachlorophenol.
 - (c) Any wood or wood product designated as scrap wood in rules promulgated by the department.



6 **SOLID WASTE EXEMPTIONS**

(PART 115, SECTION 11506(I))

(b) – scrap wood used as fuel

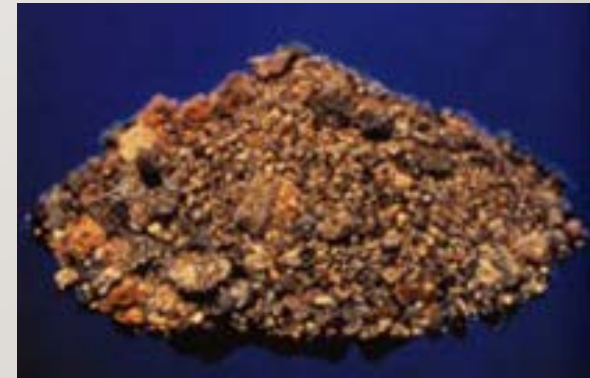
(j) – source separated materials

(l) – coal ashes under certain circumstances

(m) – inert material

(p) – diverted wastes

(q) – beneficial use by-products

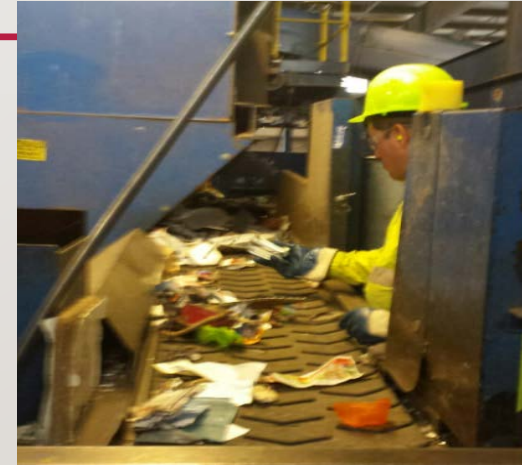


Coal Bottom Ash

7 SOURCE SEPARATED MATERIALS

(PART 115, SECTION 11506(6))

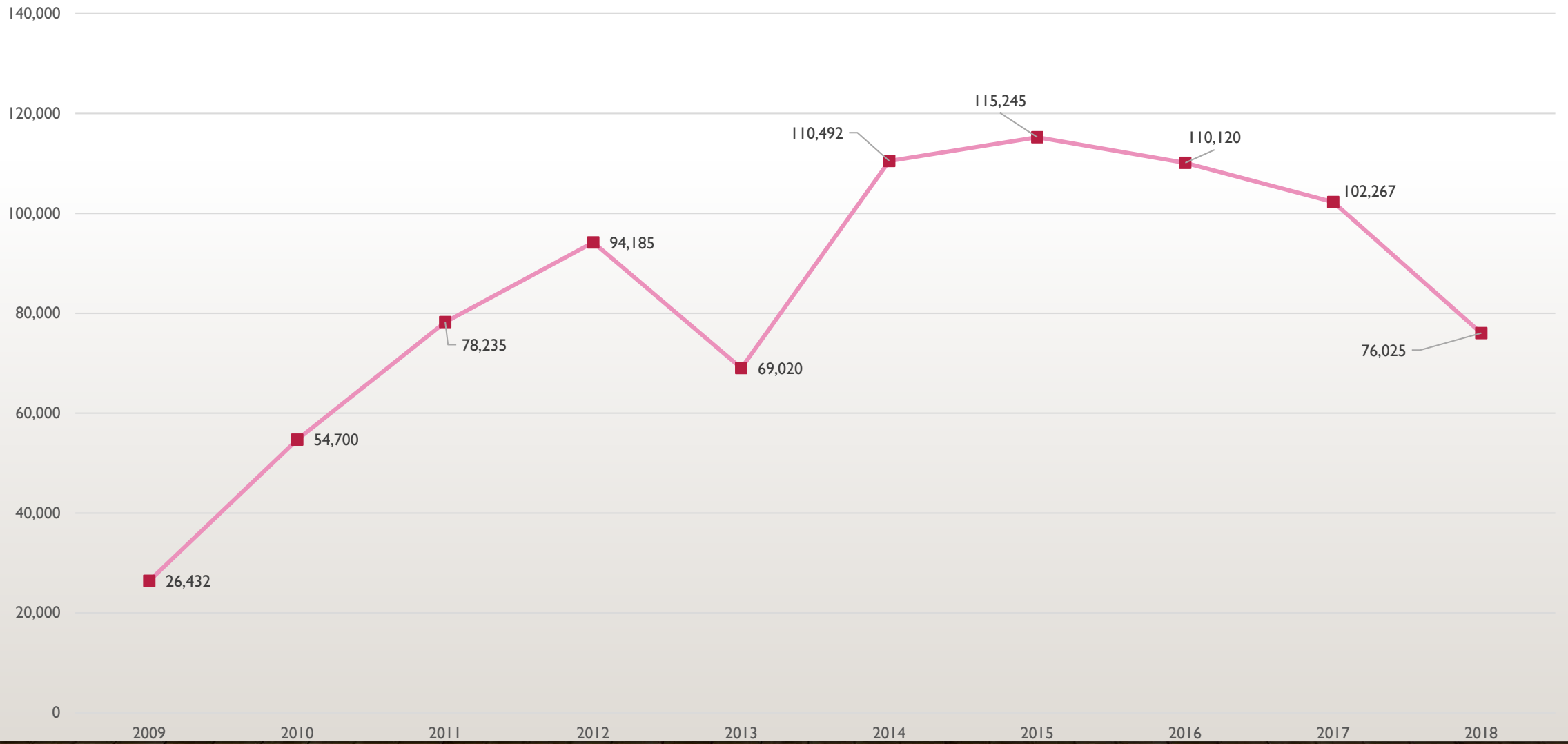
- Glass, metal, **wood**, paper products, plastics, rubber, textiles, garbage, or any other material approved by the department that is used for conversion into raw materials or new products.
- Scrap wood, rail road ties, tires, and paint solids used for fuel in an industrial boiler, kiln, power plant, or furnace.



2018 INDUSTRIAL BY-PRODUCT RECYCLING RATES

Material	Recycled	Disposed	Percent Recycled	Percent Volume Change from 2017	2009 Volumes	Percent Volume Change from 2009
Pulp/paper/wood sludge	124,111	68,755	64%	+8%	39,889	+211
Shingles	7,186	?	?	-75%	19,650	-63%
Scrap Wood	76,025	?	?	-26%	26,432	+188%
CKD	14,841	355,710	4%	-41%	29,081	-49%
LKD	51,525	?	NA	+4%	NA	NA
Foundry Sand	71,268	214,468	25%	-26%	66,870	+7%
Food Processing	14,557	?	?	-29%	16,073	-9%
Coal Ash	560,485	1,139,070	33%	+503	174,900	+220%
Drywall	8,508	?	?	-1%	1,048	+712%
FGD	442,712	?	?	+18%	32,328	+1,269%
Wood Ash	2,981	93,373	3%	-16%	5,592	-47%
Totals¹	1,374,199	?	?	+44%	411,863	+234%

Scrap Wood Recycling (Tons) Over Time



Current Composting Regulations

NON-FARM, YARD CLIPPINGS COMPOSTING FACILITIES

- Registration = over 200 cubic yards of Yard Clippings on site
 - \$600 registration fee
 - Lasts three years
- Specific isolation distance requirements (buffers) for new facilities
- Must stay under 5,000 cubic yards on any acre of the site
 - Unless otherwise approved by the Department
- Material cannot stay on site more than three years
- Records keeping and Annual Volume Report

PROPOSED COMPOSTING CHANGES

Compost Facilities

Small Composting Facility

- 500 – 1,000 yds³
- Must Notify the Department that it is in operation
- Must not contain more than 5% of Class I compostable materials other than yard waste

Medium Composting Facility

- 1,000 – 10,000 yds³
- Must obtain a Registration
- Annual Inspection
- No more than 5,000 yds³ per any acre of the site
- Must not contain more than 10% of Class I compostable materials other than yard waste

Large Composting Facility

- Over 10,000 yds³
- Must obtain a General Permit
- Annual Inspection
- Financial Assurance
 - Each Site = \$20,000

Facilities exempt from regulation:

- Compost Facilities under 500 yds³
- Temporary accumulation sites
- Sites that generate and use the compostable material on-site
- Farms that make and use compost on-farm

PILOT STUDY REQUIREMENTS

- Since scrap wood is a listed low-hazard industrial waste R 299.41 17(4) allows a generator to do a pilot study by notifying the DEQ
- Requirements of a pilot study
 - Notify the DEQ before doing pilot
 - Can use up to 100 dry tons of material
 - Submits report to DEQ within 90 days of completing pilot
 - Must ensure that the storage or composting does not result in environmental contamination. This would require that the composting be done in vessel, building, on a liner, or with some kind of monitoring to ensure that there has been no discharge.

DEQ GRANT OPPORTUNITIES – CURRENT

- 2019 Recycling Infrastructure Grant
 - Amount - \$500,000
 - Maximum per grant - \$100,000
 - Match – 25%
 - Who is eligible – cities, villages, townships, counties, tribal government, municipal solid waste authorities, resource recovery authorities, non-profits
 - When are grants due – March 1, 2019

DEQ GRANT OPPORTUNITIES – FUTURE

- PA 588 – Approved by the Governor on December 28, 2018
 - Amount \$15,180,000
 - How can the money be spent
 - Materials management planning
 - Local recycling programs
 - Market development
 - Who is eligible
 - Counties, regional planning agencies, municipalities, non-profit, or for-profit entities
 - When will RFP be out on the street - ????
 - When applications will be due - ????

WHAT IS IT?

michigan
materials
marketplace

State-sponsored launch of a nationwide materials reuse platform

Facilitated program; opportunities are “pushed” to participants and active support provided

Matches by-products producers with potential consumers & service providers

Participants can evaluate and then connect to other companies



HOW DOES IT WORK?

michigan
materials
marketplace

1. michigan.materialsmarketplace.org
2. Click “Get Involved”
3. Set up a user name & password
4. Post materials you have or want
5. Make reuse / recycling connections



WHY DOES IT WORK?

Collects needed info on materials

Enables direct contact

Easy to use

Active assistance

Scrap wood; various types

michigan
materials
marketplace



\$0 per Ton

Number of Tons

1

Start Transaction

Edit listing

Close listing

Move to top of homepage

Show in the next newsletter



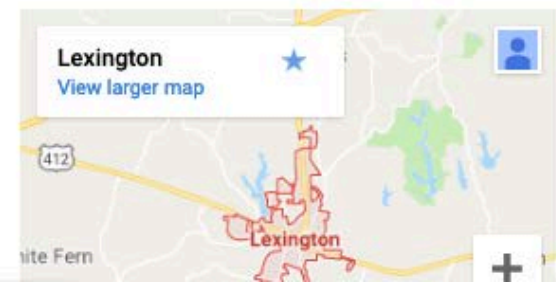
Matt Trull

Contact



Estimated 750 tons annually, with an expected increase for 2019. We are currently sending all of this scrap wood to a landfill. Would love for someone to find a use for it. We have looked at the option of buying a wood chipper to make transportation easier.

Various types of wood included. Generally comes in on shipments from materials that we receive. normally wont get pallets, but will get some heavy pieces at times. Hard and soft wood.



FOR ADDITIONAL EXEMPTION INFORMATION CONTACT:

Duane Roskoskey, P.E.

Phone: 517-582-3445

E-mail: roskoskeyd@michigan.gov

or

Aaron Hiday

Phone: 517-282-7546

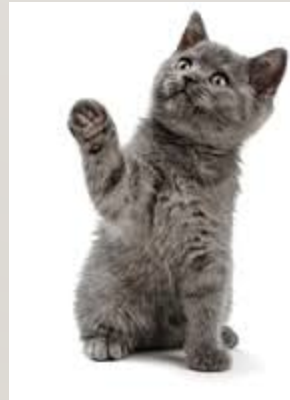
E-mail: hidaya@michigan.gov

Web site: Go to www.michigan.gov/deqwaste, then select

“Solid Waste” (white tab on the left) for access to:

- Solid Waste Statutes and Rules
- Exemption Guidance
- Beneficial Use Resources

QUESTIONS



QUEST



THANK YOU FOR PROTECTING
MICHIGAN'S ENVIRONMENT!